

## COMMUNICATIONS – VOIP PBX, VOIP PHONES & VIDEO CONFERENCING

VOIP IP-PBX - S SERIES IP-PBX	
	<b>S300 VOIP PBX</b> S300-24 BRI Ports
	<b>S100 VOIP PBX</b> S100-16 BRI Ports
	<b>S50 VOIP PBX</b> S50-8 BRI Ports
	<b>S20 VOIP PBX</b> S20-4 BRI Ports
VOIP IP-PBX	
GSM GATEWAYS	
	<b>TG1600 - 2*WM8</b> VoIP UMTS Gateway TG1600



**TG800 - 8\*WM1**

VoIP UMTS Gateway TG800



**TG400 - 4\*WM1**

VoIP UMTS Gateway TG400



**TG200 - 2\*WM1**

VoIP UMTS Gateway TG200



**TG100 - 1\*WM1**

VoIP UMTS Gateway TG100

**VOIP GATEWAYS - TA SERIES**



**TA1610**

TA1610 16 Port VoIP FXO Gateway



**TA810**

TA810 8 Port VoIP FXO Gateway



**TA410**

TA410 4 Port VoIP FXO Gateway



**TA3200**

TA3200 - 32 Port VoIP FXS Gateway



**TA2400**

TA2400 - 24 Port VoIP FXS Gateway



**TA1600**

TA1600 - 16 Port VoIP FXS Gateway



**TA800**

TA800 - 8 Port VoIP FXS Gateway



**TA400**

TA400 - 4 Port VoIP FXS Gateway



**TA200 ATA**

TA200-2 FXS Port Analog Telephone Adapter



**TA100 ATA**

TA100-1 FXS Port Analog Telephone Adapter

**VOIP GATEWAYS – TE SERIES**



**TE200 2 E1 PRI Ports**

PRI VoIP Gateway TE200



**TE100 1 E1 PRI Ports**

PRI VoIP Gateway TE100

VOIP IP PHONE

VOIP IP PHONE - EXECUTIVE



**SIP-T48G**



**SIP-T29G**

**Gigabit Color Phone**



**EHS36**

IP Phone Wireless Headset Adapter



## EXP20

IP Phone Expansion Module (LCD)



## EXP40

LCD Expansion Module



## SIP-T19 E2

SIP-T19 E2, Entry Level IP Phone (without PoE)



### **SIP-T19P E2**

SIP-T19P E2, Entry Level IP Phone (with PoE)



### **SIP-T21 E2**

Entry Level IP Phone (without PoE)



### **SIP-T21P E2**

Entry Level IP Phone (with PoE)



### **SIP-T23P**

Professional IP Phone



## SIP-T29G

Gigabit Color Phone



## W56P

IP Phone DECT Phone -EU version



## W52P

DECT Cordless Handset + Base Unit -EU version





### **SIP-T40P**

Ultra-elegant IP Phone



### **SIP-T41P**

Ultra-elegant IP Phone



### **SIP-T46G**

Ultra-elegant Gigabit IP Phone



### **SIP VP-T49G**

A Revolutionary Video Collaboration Phone



**CPE80**

CP860 Expansion Microphone

**VOIP IP PHONE – VIDEO Conferencing**



**VC120-12X**

**1080P Full-HD Video Conferencing Experience**



**VCB20 - Yealink VC Dual-camera Box  
VCB20**



**VCC20 - VCC20 12x Camera**



**WF40 - Optional protect case for W56H**



**BT40 - IP phone Bluetooth USB Dongle**



**YHS32 - IP Phone Headset**



**D30**

Add 100 VoIP Users + 30 Concurrent Calls



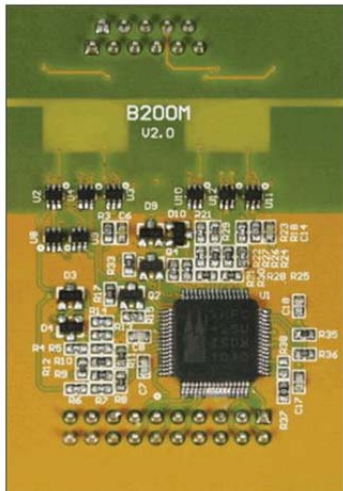
**EX30**

EX30 has 1 onboard E1/T1/PRI port



**EX08**

EX08 has 4 onboard module slots and 8 interfaces on the panel.



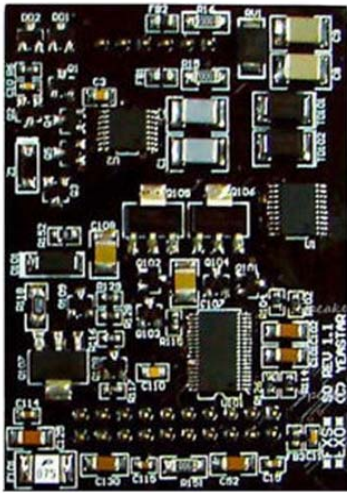
**B2 Module 2BRI**

B2 is a module with 2 BRI ports to terminate two BRI lines.



### UMTS(3G) Module 1 UMTS Trunk

UMTS (3G) Port for GSM/3G Voice CallsA module with 1 UMTS port to terminate UMTS



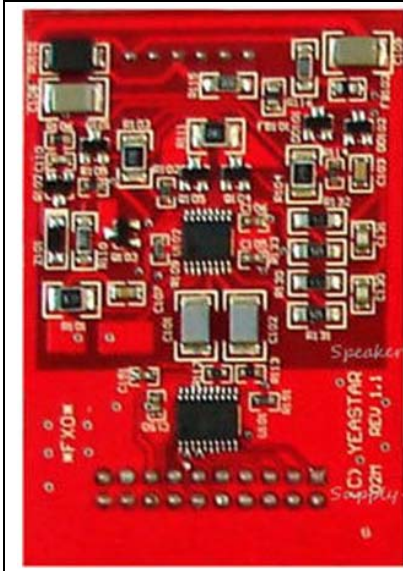
### SO Module 1FXO+1FXS

SO Module (1 FXS & 1 FXO Ports)



### S2 Module 2FXS

S2 is a module with 2 FXS ports to terminate two analog telephone.



## O2 Module 2FXO

O2 is a module with 2 FXO ports to terminate two analog PSTN (POTS) lines.

